



Assessing Capacity for Community Change Efforts

Learnings from an Adaptive Initiative

Kat Athanasiades

Veena Pankaj

Deanna Van Hersh

Innovation Network

www.innonet.org

Kansas Health Foundation

www.khf.org

Agenda

1

Background

2

Tool Development

3

Tool Considerations

Agenda

1

Background

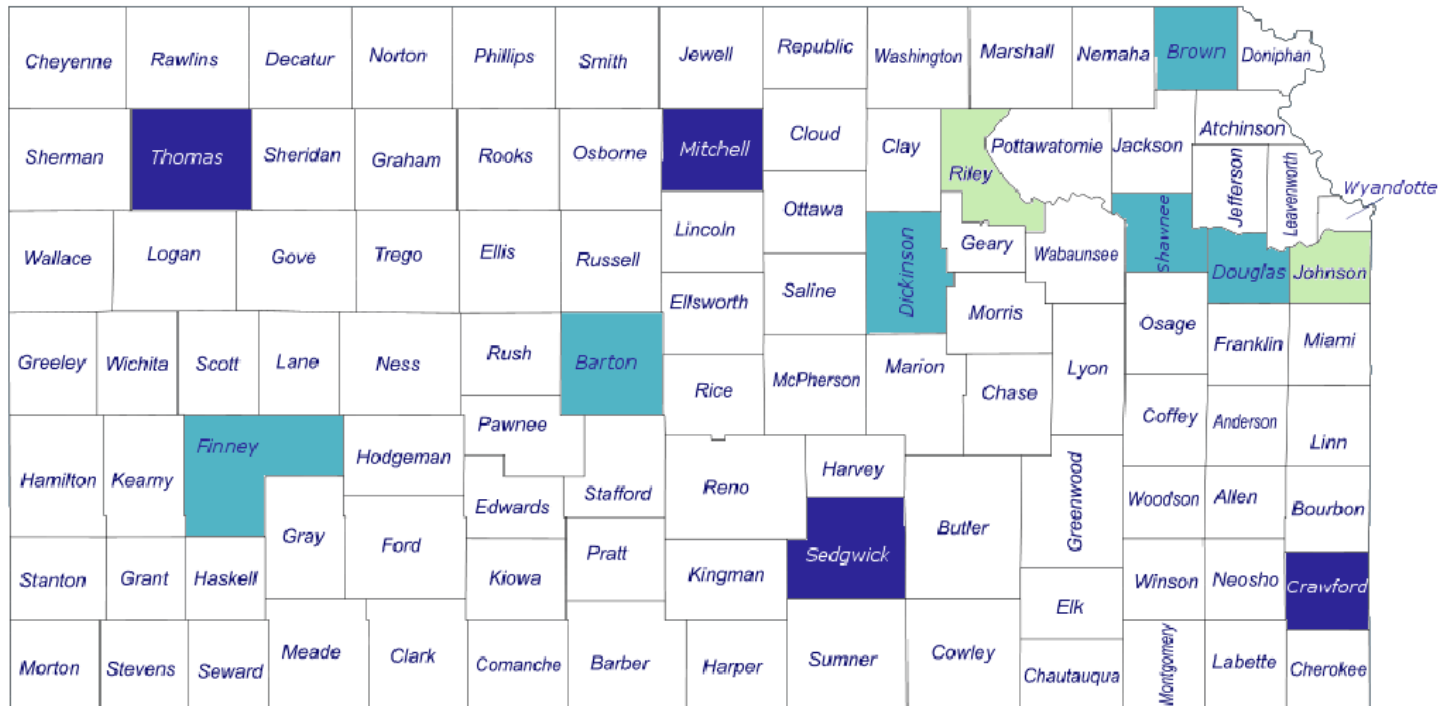
2

Tool Development

3

Tool Considerations

Healthy Communities Initiative



Twelve communities funded to work on the planning and implementation of **policies** improving **healthy eating and active living**

Agenda

1

Background

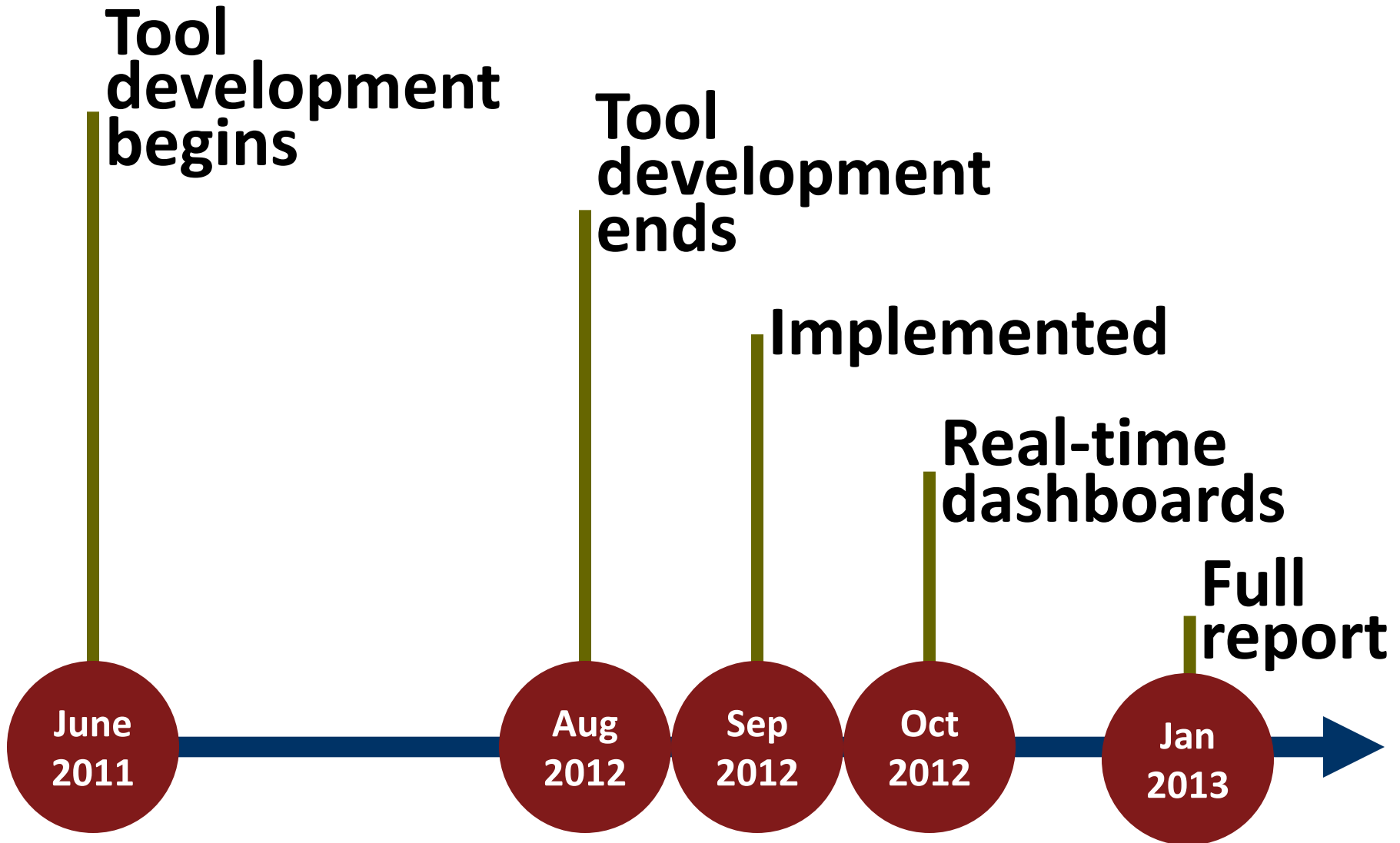
2

Tool Development

3

Tool Considerations

Timeline





Ability to
Cultivate
and Develop
Champions

Cultivating awareness,
supporters, and
champions

Growing awareness and
will for action

Ability to
Cultivate
and Develop
Champions

- > The coalition increases the awareness of diverse groups within target audiences

Ability to Cultivate and Develop Champions

- > The coalition increases the awareness of diverse groups within target audiences
- > The coalition cultivates supporters among diverse groups within target audiences

Ability to Cultivate and Develop Champions

- > The coalition increases the awareness of diverse groups within target audiences
- > The coalition cultivates supporters among diverse groups within target audiences
- > The coalition identifies potential champions across diverse groups

Reputation and Visibility

Coalition efforts to be
visible with stakeholders
and target audiences

Reputation and Visibility

- > Coalition members are seen as knowledgeable about their issues by target audiences

Reputation and Visibility

- > Coalition members are seen as knowledgeable about their issues by target audiences
- > The coalition develops messaging appropriate to diverse groups within target audiences

Reputation and Visibility

- > Coalition members are seen as knowledgeable about their issues by target audiences
- > The coalition develops messaging appropriate to diverse groups within target audiences
- > The coalition influences conversations among target audiences about its issues

Demographics

Demographic Information

We would like to start by learning more about who you are and some key characteristics about your coalition. You won't be personally identified in the results, but this information will provide important context for your responses. **Please remember that your individual responses will be anonymous.** All responses from your fellow coalition members will be aggregated with yours to provide a summary score for your individual coalition.

Using the scale below, how do you describe **your** overall level of engagement with the coalition?

- Not at all engaged Somewhat engaged Engaged Very engaged
-

Role:

- [Kansas roles]
 - Other, please specify
-

Was your coalition formed as a result of the [KHF Healthy Communities Initiative] grant?

- Yes, we formed as a result of the KHF Healthy Communities Initiative grant
 - No, but we formed a subgroup within our coalition to focus on the KHF Healthy Communities Initiative grant
 - No, we existed prior to the KHF Healthy Communities Initiative grant
 - Other, please explain
-

How long has your coalition been in existence?

- Formed less than 2 years ago
- Formed more than 2 years but less than 4 years ago
- Formed more than 4 years ago

When did you (as an **individual**) join the **coalition**?

- Less than one year ago
- More than one but less than two years ago
- More than two but less than four years ago
- More than four years ago

How long have you (as an **individual**) been a member of your **community**?

- Less than two years
- More than two but less than five years
- More than five but less than ten years
- More than ten years

Basic Functioning and Structure

This section examines some of the basic structures and processes that your coalition may have in place as well as your coalition's ability to function.

	Strongly Disagree	Disagree	Agree	Strongly Agree	N/A
The mission, vision, and values of the coalition are clear.	<input type="radio"/>	<input type="radio"/>	<input type="radio"/>	<input type="radio"/>	<input type="radio"/>
Members share the vision and values of the coalition.	<input type="radio"/>	<input type="radio"/>	<input type="radio"/>	<input type="radio"/>	<input type="radio"/>
The coalition has an environment of open and honest sharing of information.	<input type="radio"/>	<input type="radio"/>	<input type="radio"/>	<input type="radio"/>	<input type="radio"/>
The coalition sets a work agenda that includes achievable milestones.	<input type="radio"/>	<input type="radio"/>	<input type="radio"/>	<input type="radio"/>	<input type="radio"/>
The structure of the coalition is well-defined (e.g., leadership teams, subcommittees, funding streams).	<input type="radio"/>	<input type="radio"/>	<input type="radio"/>	<input type="radio"/>	<input type="radio"/>
The structure of the coalition is functional .	<input type="radio"/>	<input type="radio"/>	<input type="radio"/>	<input type="radio"/>	<input type="radio"/>
The roles and responsibilities of the coalition's subcommittees and/or members are well-defined .	<input type="radio"/>	<input type="radio"/>	<input type="radio"/>	<input type="radio"/>	<input type="radio"/>
The coalition identifies strategies based on community needs.	<input type="radio"/>	<input type="radio"/>	<input type="radio"/>	<input type="radio"/>	<input type="radio"/>

The roles and responsibilities of the coalition's subcommittees and/or members are **well-defined**.

The coalition **identifies strategies** based on community needs.

The coalition **identifies opportunities** as they arise for advancing the work of the coalition.

The coalition **capitalizes on opportunities** as they arise for advancing the work of the coalition.

The coalition invests its **monetary resources** effectively and efficiently.

The coalition invests its **non-monetary resources** effectively and efficiently (e.g., human resources, in-kind donations).

If you had difficulty selecting an answer for any of the questions above relating to **Basic Functioning and Structure**, could you please elaborate below on which statement it was and why you had that difficulty? **(optional)**

Agenda

1

Background

2

Tool Development

3

Tool Considerations

**What other
perspectives should be
considered when
developing this tool?**

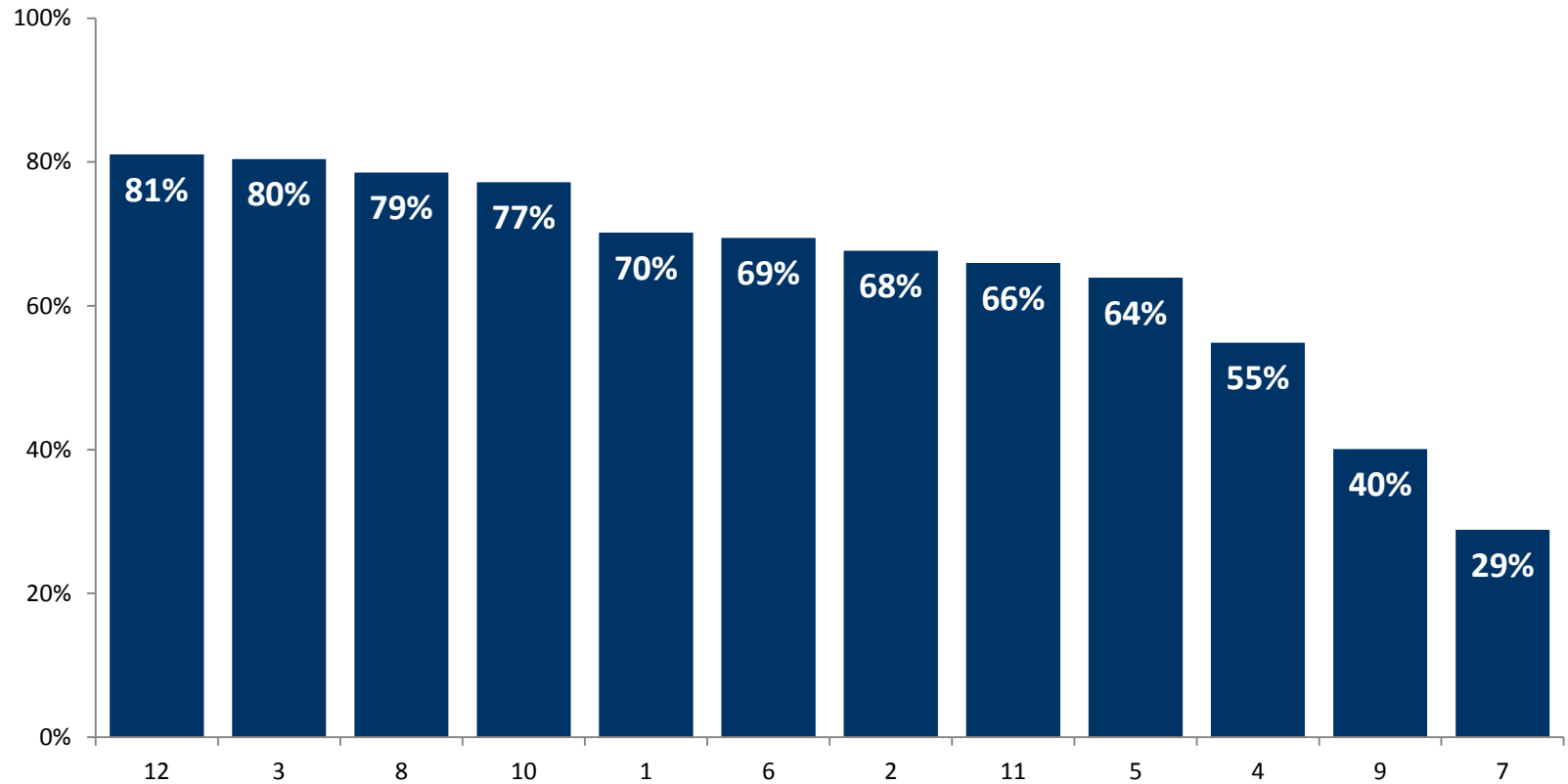




**What kind of
information can the
coalition assessment
tool provide?**

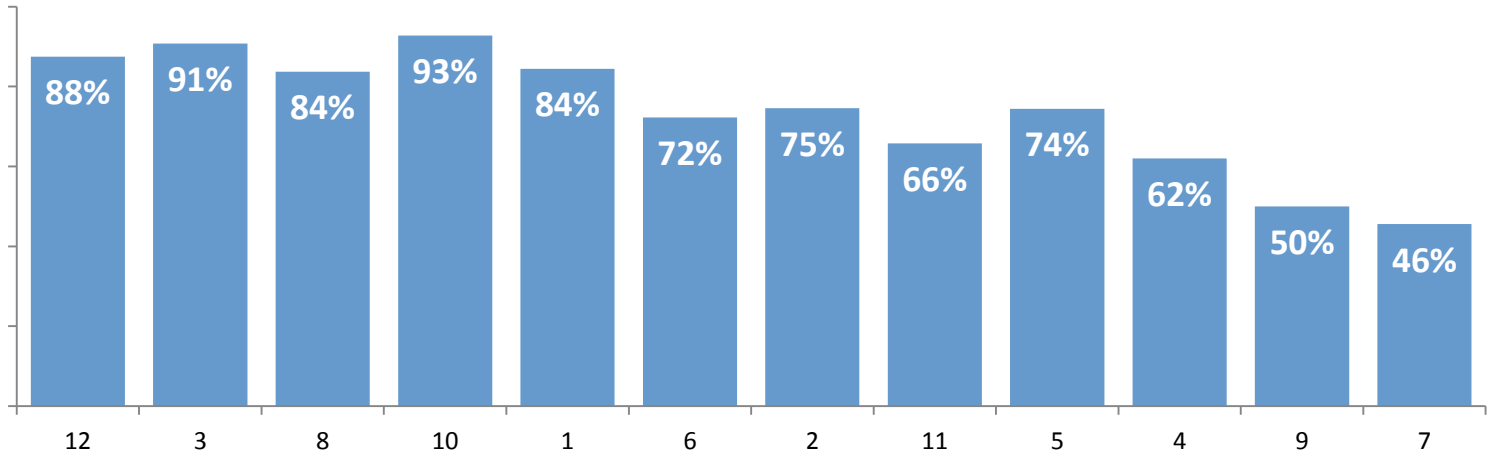


Overall Scores by Coalition

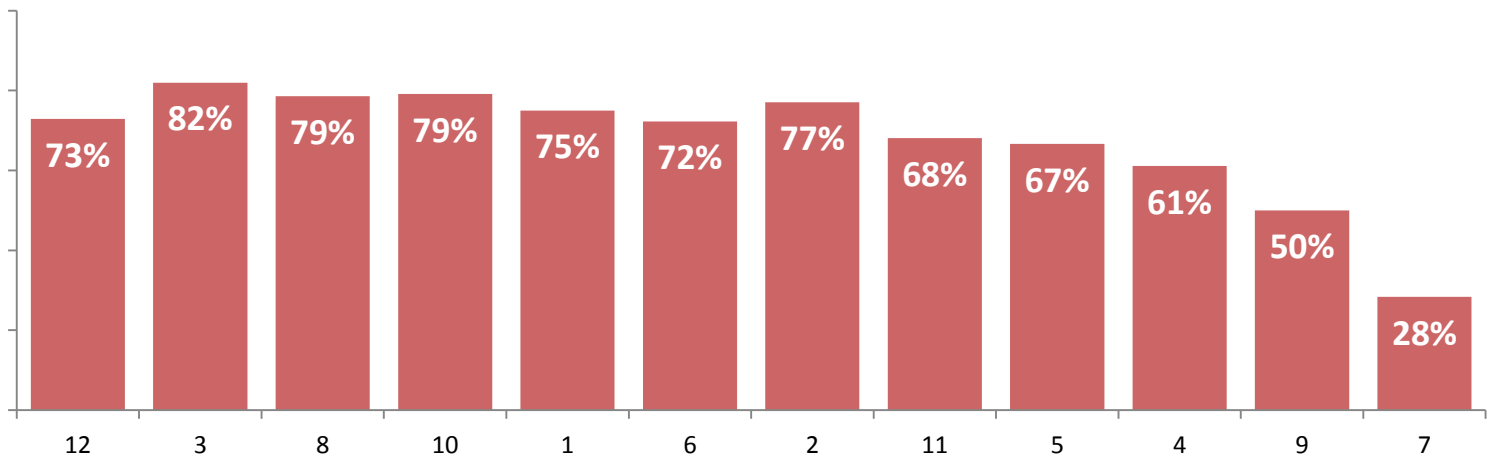


Section Scores by Coalition

Basic
Functioning



Champions

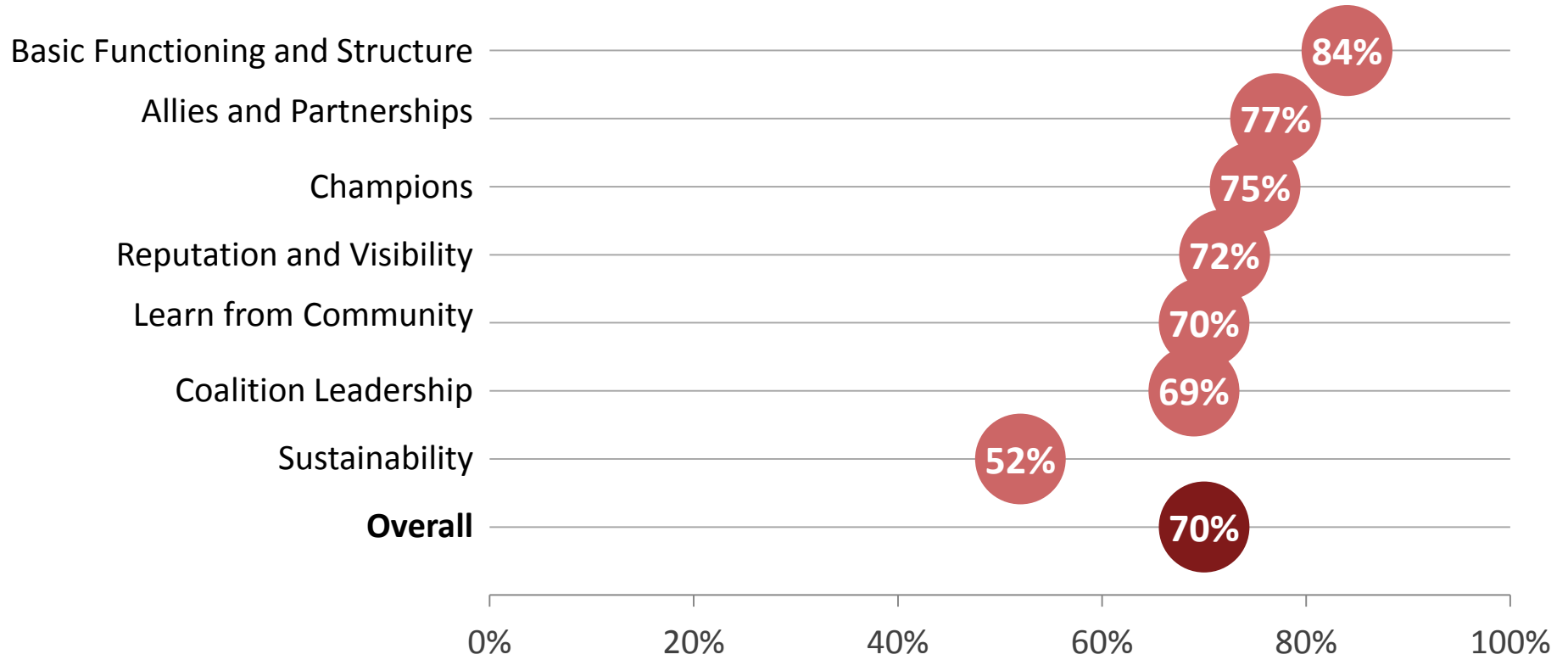


**How can I make sure
the results accurately
reflect the coalitions?**

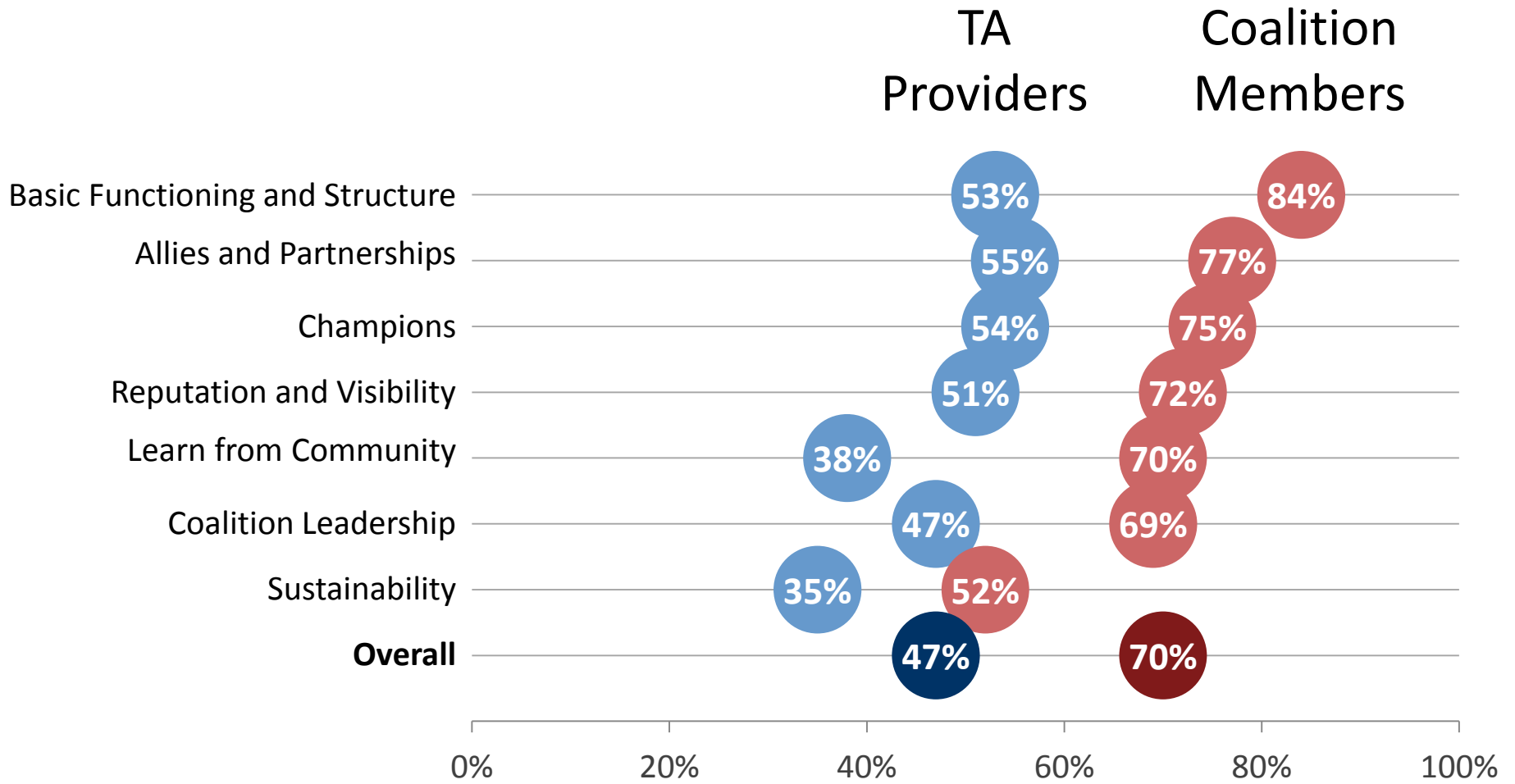


Triangulation

Coalition
Members



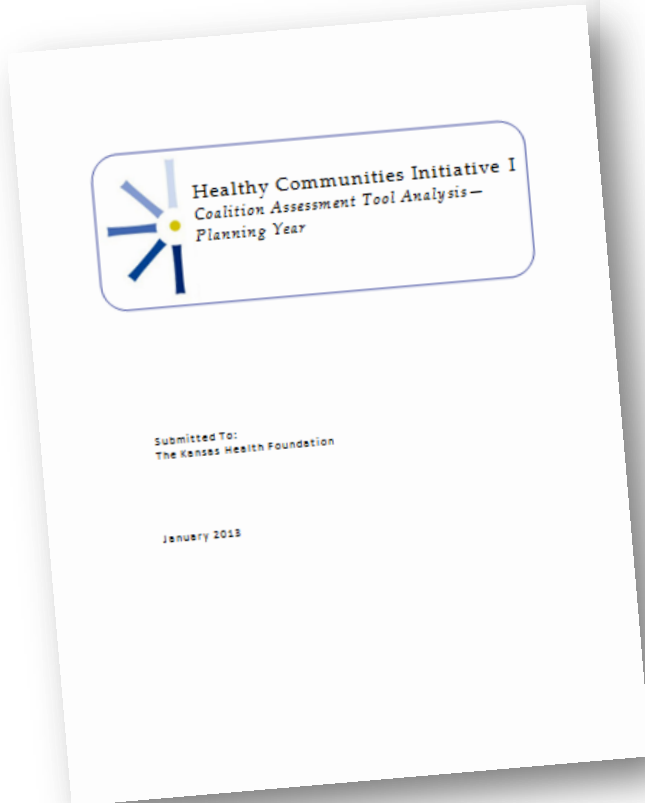
Triangulation



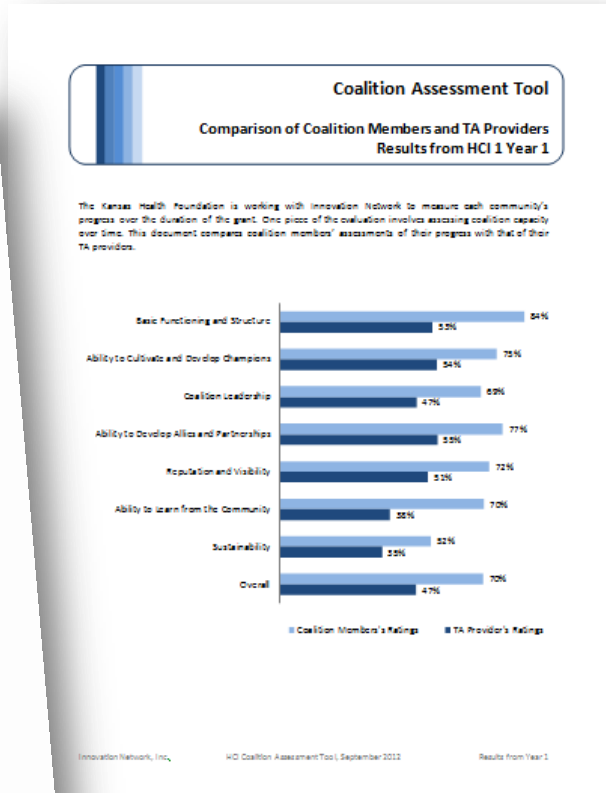
**How can I use
information from a
coalition assessment
tool?**



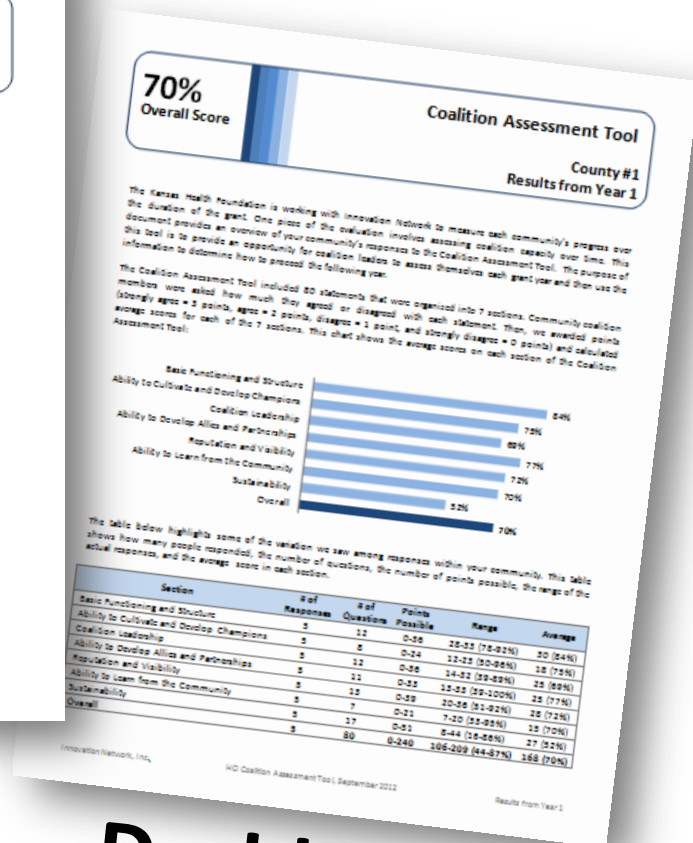
Data Use



Reports



Memos



Dashboards

Thank You!



**Innovation
Network**



**Kansas Health
Foundation**

Kat Athanasiades

Associate

kathanasiades@innonet.org

Veena Pankaj

Director

vpankaj@innonet.org

Deanna Van Hersh

Director of Evaluation and

Program Administration

dvhersh@khf.org